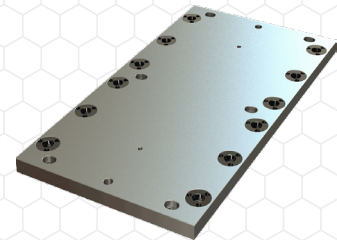


### Carr Lock® Fixture Plates

- Precision-machined MIC-6 cast aluminum plates.
- Available in a wide range of standard sizes to use as a base for building quick-change fixtures.
- Fixture plates are quickly located and mounted on a subplate using Carr Lock® Clamps.



### Carr Lock® Subplates

- Precision-machined steel plates with Carr Lock® Receiver Bushings installed in a standard pattern.
- Serve as the foundation of an efficient quick-change fixturing system.



### Carr Lock® Fixture Machining Kits

- Available in 20mm and 25mm shank diameter for the following plate thicknesses: 20mm dia (3/4" plate thickness), 25mm dia (3/4" plate thickness), 25mm dia (1" plate thickness).



### Carr Lock® Protection Plugs

- Keep chips and debris from entering unused receiver bushings in a subplate.
- Durable plastic plugs fit snugly in the receiver hole, yet can be easily removed.

## Resources



Learn more about the Carr Lock® system and other products.

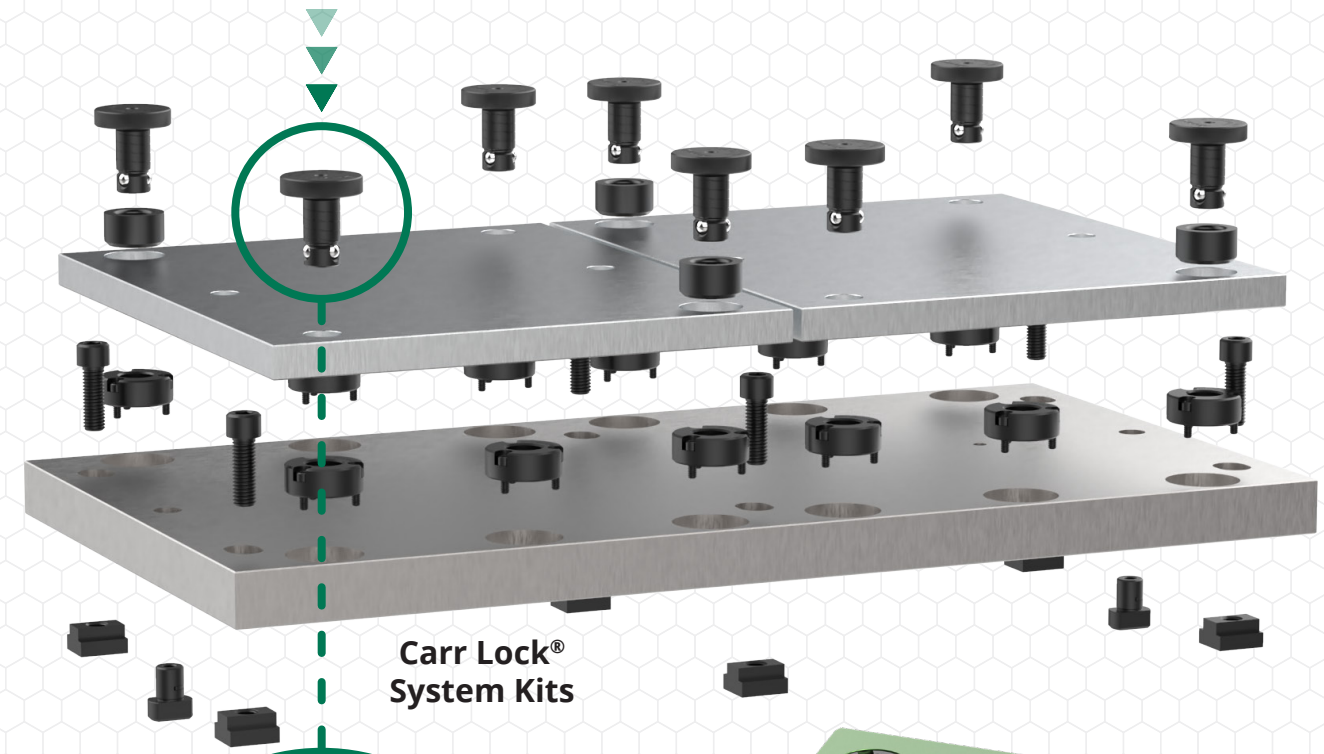


Watch this video to see the latest additions to the Carr Lock® system.

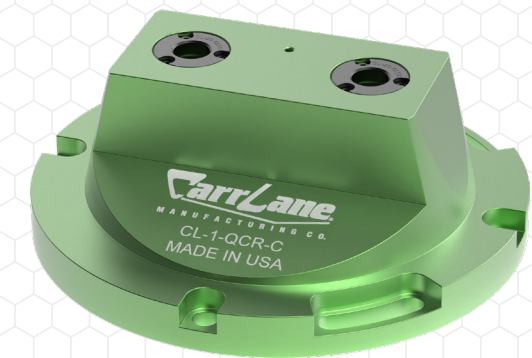
Visit [CarrLane.com/carrlock](https://CarrLane.com/carrlock) to use our RIO calculator

## Go Lean With The

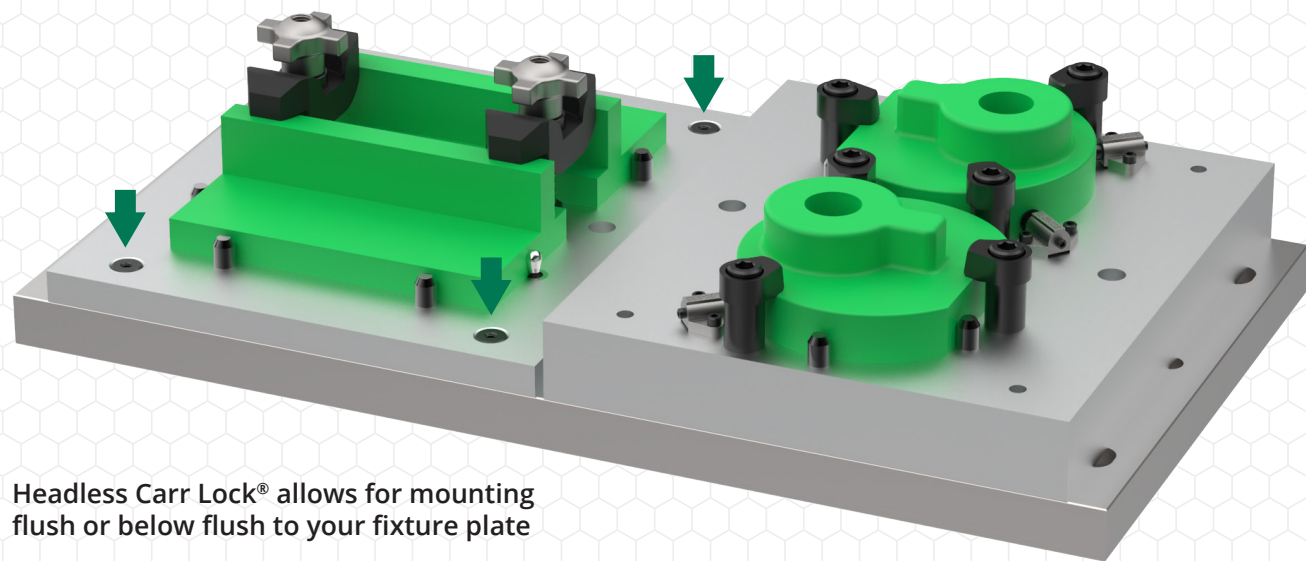
# CarrLock® System



Headless Carr Lock® Clamps



Quick-Change Carr Lock® Riser



Headless Carr Lock® allows for mounting flush or below flush to your fixture plate



For applications where higher precision and accuracy are needed use:

- A secondary Headless Carr Lock® Clamp along with a round or diamond pin



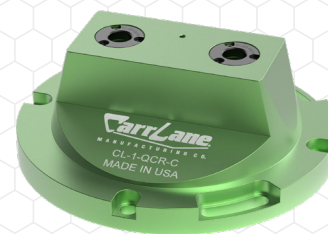
For standard applications it's recommended to use one Primary Headless Clamp with one Secondary Headless Clamp

- Primary Clamp—used to accurately locate your jig or fixture
- Secondary (Floating Clamp) – looser fit to reduce binding



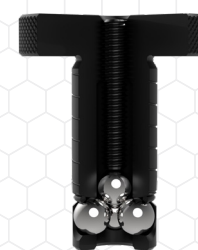
### Carr Lock® System Kits

- Carr Lock® System Kits include everything you need to set up an efficient quick-change fixturing system.



### Quick-Change Carr Lock® Riser

- The Quick-Change Carr Lock® Riser is ideal for use in 3+1, 3+2, and 5 Axis applications using standard Carr Lock® Clamps or Headless Carr Lock® Clamps.
- The height of the Riser is specially designed to elevate the workpiece from the table to provide spindle clearance. To reduce weight, while maintaining strength it is precision machined from 6061 Aluminum.
- It mounts easily to most machines and may be mounted in several positions utilizing either a ½" or M12 Socket head cap screws.
- This riser can be accurately located to the center of a fixture or rotary table using a Center Locating Key (CLM-25-CLK-50).
- Made in the USA.



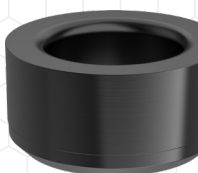
### Carr Lock® Clamps

- Inch and Metric options, each in a choice of lengths for different top plate thicknesses.
- Available in the following shank diameters: 13mm, 16mm, 20mm, 25mm, 30mm, 35mm and 50mm.
- Made in the USA.



### Headless Carr Lock® Clamps

- Ideal for mounting quick-change tooling on a subplate while taking minimal real estate on the top of your fixture.
- The Headless Carr Lock® Clamp comes in two variants, primary (-1) and secondary (-2). The primary clamp is used to accurately locate your plate while the looser fit on the secondary clamp reduces binding.
- Available in 13mm, 16mm, and 20mm Shank Diameters.
- Made in the USA.



### Carr Lock® Liner Bushings

- One mounting hole designated as the primary reference hole (Primary Liner Bushing).
- One mounting hole designated as the secondary reference hole (Secondary Liner Bushing or Slotted Locator Bushing).



### Carr Lock® Receiver Bushings

- The Carr Lock® System requires that each Carr Lock® Clamp be used together with one of these Receiver Bushings.
- The clamp's locking balls engage the angled ID section of the Receiver Bushing, pulling the clamp firmly downward.
- Made in USA.